

MAXXUM SERIES TRACTORS

**CASE II**  
AGRICULTURE

**MAXXUM**<sup>®</sup>

SERIES TRACTORS



**CASE II**  
AGRICULTURE









# MAXXUM SERIES TRACTORS

5 Models | 116–145 HP | 95–125 PTO HP\*

THE DO-IT-ALL TRACTOR EVERY FARM NEEDS.

Delivering premium features of a high-horsepower tractor in a utility package, Maxxum series tractors combine the flexibility and productivity customers demand. Powered by FPT engines with proven Selective Catalytic Reduction (SCR) emission technology, Maxxum tractors deliver the efficient power needed to handle the multiple tasks of livestock and row crop operations, loader work, specialty crop production or roadside mowing.

Maxxum series tractors are available with many options, including three transmissions, a variety of front axles, and multiple hydraulic systems, making the Maxxum series tractor the ideal tractor for any operation.

Maxxum Utility Package . . . . .	4–5
Engine Options & SCR Technology . . . . .	6–7
PTO Power . . . . .	8–9
Maxxum ActiveDrive 4 . . . . .	10–13
Maxxum ActiveDrive 8 . . . . .	14–17
Maxxum CVXDrive . . . . .	18–20
Operator Comfort & Features . . . . .	21
Intuitive Operation . . . . .	22–23
Lighting Packages . . . . .	24–25
Technology in the Field . . . . .	26–27
L10 Series Premium Loaders . . . . .	28–29
ActiveDrive 4 Specifications . . . . .	30–31
ActiveDrive 8 & CVXDrive Specifications . . . . .	32–33
Support . . . . .	34
The Right Red Tractor . . . . .	35

\* See product specifications for details.

# DELIVERING PREMIUM FEATURES OF A HIGH-HORSEPOWER TRACTOR IN A UTILITY PACKAGE.

## EFFICIENT POWER.

- Five models from **116 to 145 engine hp** with 95 to 125 PTO hp.
- Three transmission choices:
  - **ActiveDrive 4 transmission (16×16)** provides an entry-level semi-powershift solution.
  - **ActiveDrive 8 dual clutch transmission (23×23 or 24×24)**. Range “B” is designed to cover the majority of field operations, with speeds ranging from 2.4 to 10.7 mph without torque interruptions or mechanical range changes.
  - **CVXDrive™ transmission** automatically selects the most efficient gear ratio and engine speed to achieve target ground speed.
- Patented **SCR-only Tier 4 B/Final** design delivers **simplified emissions** with no regeneration.

## VERSATILITY.

- Loader work, mowing, municipalities, sprayers and row crop applications.
- New front-axle options with increased durability.
- Front 3-point hitch and PTO options deliver power for specialty applications.
- Heavy-duty **2WD front axle** available.
- The optional **AFS Pro 700 display** ensures your Maxxum tractor is able to gather information and interface with your **ISOBUS compliant baler** the moment you pull into the field\*.
- **Adaptive Steering Control** reduces the number of steering wheel rotations lock to lock\*.

## COMFORT & CONVENIENCE.

- **Newest Case IH family styling** with sleek hood, grill design and LED working light packages.
- Spacious **SurroundVision™ cab** with available cab suspension and **standard high-visibility roof panel**.
- Shift gears directly from the new **Advanced Loader Joystick\*** without removing your hand from the controller.
- MultiFunction Handle **places most-frequently used functions in one hand** for easy operation\*.
- Available factory-installed **AFS AccuGuide™** autoguidance with AFS Pro 700 display\*.

\*Not available on ActiveDrive 4

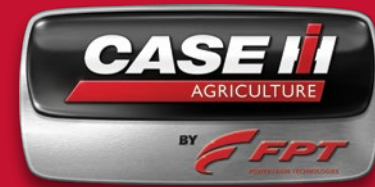






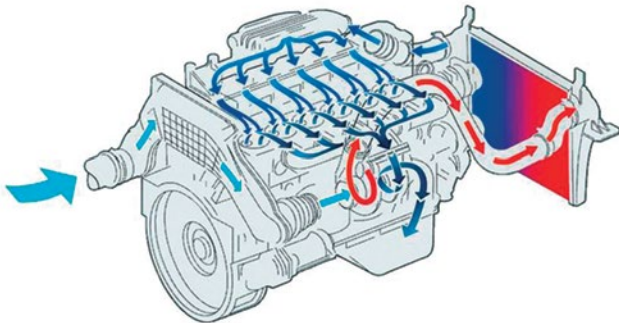
# POWER THAT DRIVES YOUR BOTTOM LINE.

Case IH has collaborated with FPT, a global leader in engine technology, to develop world-class design innovations featured in all Maxxum series tractors. This partnership has produced engines that possess unbeatable power, fuel economy, reliability and service life.



## PERFORMANCE DETAILS THAT MAKE THE DIFFERENCE.

Inlet and exhaust manifolds are positioned on opposite sides of the **Maxxum cross-flow cylinder head**, allowing the use of large inlet and exhaust ports for **optimum air/fuel mixing and combustion**.



## A BOOST WHEN YOU NEED IT.

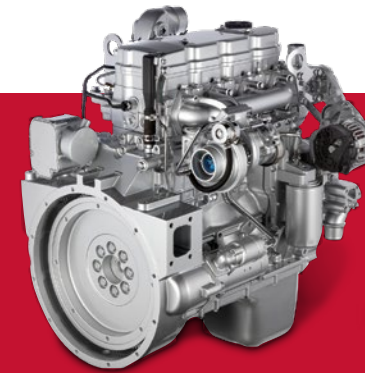
Power boost of up to 24 horsepower on the four-cylinder models and **up to 17 on the six-cylinder model** is standard on all Maxxum tractors, providing additional power during mobile hydraulic, mobile PTO, and transport operations.

## GET MORE POWER, BETTER FUEL ECONOMY AND MORE FLEXIBILITY IN FUEL CHOICE.

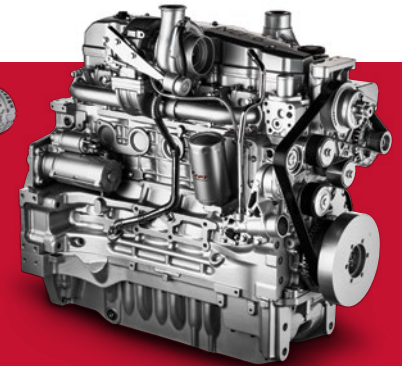
The SCR-only after-treatment system converts nitrogen oxides into nitrogen and water. The change is triggered by a non-toxic mixture called Diesel Exhaust Fluid (DEF). SCR **maximizes horsepower** because **the system is separate from the engine**. This design leads to **better fuel economy** and **improved engine durability**.







Four-cylinder engine



Six-cylinder engine

### **BIG TANKS FOR LONG DAYS.**

There are two fuel tank sizes available on all Maxxum series tractors. Choose between the **standard tank with a 56.8 gallon capacity**, or the optional **68.4 gallon capacity**. Both can be equipped with fuel tank guards. The wide filler opening allows easy refilling from ground level, with no spilling of fuel.

### **HIGH-PRESSURE COMMON RAIL FUEL SYSTEM.**

All Maxxum engines feature a **high-pressure common rail fuel system** to provide optimum engine performance. Efficient and more complete fuel combustion provides **more power, faster throttle response, better fuel economy, less noise and lower exhaust emissions.**





# CUSTOMIZE YOUR MAXXUM TRACTOR TO MEET YOUR NEEDS.

Whether you are performing fieldwork and chores around the farm or running a demanding commercial operation, you need a tractor that's strong, durable and a versatile workhorse. Maxxum series tractors combine the flexibility and productivity you need to get more done with a single tractor. Whatever your job demands, Maxxum series tractors deliver efficient power to meet every need.

## HYDRAULIC PUMPS.

Hydraulic pump options of 22.7 gpm, 31.9 gpm or 39.6 gpm provide more flow at lower engine speeds. Add Power Beyond and a case drain for additional versatility for tillage, planting and spreading applications.

- **ActiveDrive 4:** up to 4 mechanical remotes.
- **ActiveDrive 8** and **CVXDrive:** have 3 (standard) electronic remotes or 4 (optional) electronic remotes. Mechanical remote valves are also available.

## FRONT AND REAR HITCH.

- **Front 3-point Hitch:** Front hitch options allow implements to be mounted on the front of the tractor – for covering more acres per hour. Lift capacity for front hitch is up to 6,182 lb.
- **Rear 3-point Hitch:** Several rear hitch options offer the flexibility to meet the needs of many demanding 3-point hitch applications. Lift capacity for rear hitch is up to 8,945 lb.

## FRONT AND REAR PTO.

- All Maxxum tractors come standard with an independent **540/1,000 rpm PTO** with a single reversible shaft making changing speeds simple.
- Maxxum tractors can also be equipped with a **1,000 rpm front PTO** for added flexibility when using front mounted implements.





Overview of flowrate and timer settings on the AFS Pro 700 display.

#### **ADVANTAGES.**

- Up to 39.6 gpm pump flow for high-demand implements
- Up to 4 remote valves located at the rear with an option to add 3 additional mid-mounts
- Fully integrated front linkage with a lift capacity of up to 6,182 lb.
- Maximum rear lift capacity of 8,945 lb.





**MAXXUM**  
**ActiveDrive 4**



# WORKHORSE VERSATILITY THAT HELPS YOU DO MORE, MORE EFFICIENTLY.

When you need a tractor that can seamlessly go from loading the mixer wagon during morning chores to cutting and raking hay in the afternoon to rolling up bales in the evening, look to the Maxxum ActiveDrive 4 tractor. The ActiveDrive 4 is also a great tractor for municipalities and roadside mowing.



## MAXXUM ACTIVE DRIVE 4.

An entry-level, yet customizable, tractor with **four powershift gears in each range**. This **semi-power shift (SPS) transmission** helps make Maxxum tractors ideal for a wide range of tasks including loader work and PTO operations.

### Transmission options for MFD tractors:\*

- 16×16: 25 mph peak speed
  - Optional creeper speed: 528 feet per hour (0.1 mph) minimum speed at rated engine rpm.
- 17×16 Eco: 25 mph peak speed
- 17×16: 31 mph peak speed

### Transmission options for 2WD tractors:\*

- 16×16: 19 mph peak speed
  - Optional creeper speed: 722 feet per hour (0.14 mph) minimum speed at rated engine rpm.

## MFD FRONT AXLES.

Multiple front-axle systems — suspended or non-suspended, and with or without brakes — allow you to customize your Maxxum tractor to your operation. A new **class 4 heavy-duty MFD front axle system** is the **toughest axle ever offered** in a Maxxum series tractor so you have improved traction and **increased capacity** for the most demanding applications, such as loader work and mounted front tanks.

## 2WD FRONT AXLES.

When a 2WD tractor is best-suited for your needs, Maxxum 2WD models deliver all of the power, comfort and features of the Maxxum line. **Enhanced maneuverability with a tighter turn radius**, plus efficient power to the PTO and hydraulics, help make 2WD non-suspended, heavy-duty front axle an **excellent option for hay and forage operations, dairy farms, vegetable production, municipalities and small-acreage mixed farms.**

\*Speeds may vary based on tractor specs.



# SELECT YOUR COMFORT ZONE.

Whether you prefer a top-of-the-line, superior operator environment or the basic comforts, Maxxum series tractors let you customize your experience to the level that meets your individual needs.



## OPERATOR ENVIRONMENT.

The roomy Maxxum SurroundVision cab gives you plenty of space to operate, along with comfort features and options that help you stay productive.

- **Suspended cab** and **air ride seat** make those long workdays seem shorter.
- **A high-visibility roof panel** ideal for loader work helps to provide unobstructed vision in all directions.
- **New lighting packages**, include standard LED work lights and optional **task lighting packages** provide superior visibility at nighttime.
- **Intuitive gauges** display information on the console.
- The optional **instructor's seat** provides space when training new operators.

## REAR AXLE AND WHEELS.

- Choose from the standard flange or the optional 98-in. bar axle to help you find the right wheel spacing for every situation.
- Steel or cast rear wheel options make ballasting the tractor simple.

## DELUXE AIR SUSPENSION SEAT.

A full day's work moves along quicker and more efficiently when you're comfortable. The **standard air ride seat** has numerous adjustable features and holds you in a **neutral position**, even in rough terrain, **for the most comfortable ride possible.**





Deluxe Air Suspension Seat shown

- A Instructional Seat:** Ideal when training new operators or fold down to use the work surface. *(optional)*
- B Single-Piece Molded Floor:** Easy-to-clean floor covering reduces noise and vibration.
- C Foot Throttle:** Standard on all Maxxum tractors
- D Tilt and Telescopic Steering Column:** Adjustable to suit any size operator.

- E Instrument Cluster:** Shows key tractor performance with programmable display options.
- F Right-Hand Door:** Fully opening and operational. Standard on all models.
- G Hand Throttle with Gear Selector:** Incorporates engine throttle and gear selection in one hand.
- H Loader Joystick:** Ergonomically positioned and capable of operating up to 3 functions. *(optional)*

**Additional Features Not Shown:**

**High Visibility Roof Window/Panel:** Adds upward visibility for loader operation.

**HVAC Control Panel:** Backlit panel provides nighttime visibility.

**Storage Compartments:** Additional storage compartments are available as an option.





**MAXXUM**  
**ActiveDrive 8**



# INNOVATION THAT CREATES NEW POSSIBILITIES FOR PRODUCTIVITY.

The ActiveDrive 8 dual-clutch transmission offers a wider range of working speeds without torque interruptions. This transmission introduces new automated features to simplify speed selection and reduce operator fatigue.



## MAXXUM ACTIVE DRIVE 8.

Tractors feature a 24×24 semi-powershift transmission with **three ranges and up to eight powershifts** in each range.

### Transmission options include:

- 23×23: 25 mph peak speed
- 24×24 Eco: 25 mph peak speed
- 24×24: 31 mph peak speed
- Optional creeper speed: 800 feet per hour (0.15 mph) minimum speed at rated engine rpm.

## PERFORMANCE THAT'S OUTSTANDING IN THE FIELD.

The **strength, versatility and durability** of Maxxum series tractors can benefit your operation year-round. Whether planting corn, baling hay or taking care of farmstead chores, Maxxum tractors get the job done.

- **24-speed transmission** features eight powershift speeds in three electronically shifted ranges.
- Wider range of working speeds **without torque interruptions and no manual range changes required.**
- Speeds between **2.4 and 10.7 mph in the middle range (B)** are ideal for 90 percent of field, hay & loader applications.

## SMART RANGE SHIFT.

**Smart Range Shift** allows you to change ranges at any time and from any gear by pressing two buttons on the MultiFunction handle—no need to shift through each gear or use the clutch pedal. The tractor will select the right gear in the next range based on your ground speed.



# INTRODUCING NEW AUTOMATED FEATURES THAT SIMPLIFY OPERATION AND REDUCE FATIGUE.

To simplify speed selection and reduce operator fatigue, the ActiveDrive 8 transmission adds new automated features such as Auto Shift, ActiveClutch II™, Memory Shuttle and Smooth Shift.



## AUTO SHIFT.

The ActiveDrive 8 transmission features two modes of automatic shifting: **Road Mode** and **Field Mode**. When these modes are active the transmission will shift automatically by either moving the MultiFunction handle or depressing the foot throttle.

- **Road Mode** is designed for any roading application and will automatically shift between B and C ranges.
- **Field Mode** allows the operator to choose between a span of up to eight gears in A or B range.

## ACTIVECLUTCH II.

ActiveClutch II allows the operator to **slow or stop the tractor without using the clutch**. Simply depress both the brake pedals and the tractor speed will decrease and come to a stop. This is an ideal feature for loader operations, roading, baling hay, or any operation that requires **frequent stops**.

## MEMORY SHUTTLE.

Memory Shuttle **remembers the last gear** you shifted to **in each direction and automatically returns** to that gear each time you shuttle forward or reverse. This is a great feature for operations that require a lot of **repetitive direction changes**.

## SMOOTH SHIFT.

The **Smooth Shift feature** automatically adjusts engine rpm while shifting to compensate for loads. **This reduces driveline shock and increases operator comfort.**





Deluxe Active Leather Seat Option Shown

**A Instructional Seat:** Ideal when training new operators or fold down to use the work surface. *(optional)*

**B Single-Piece Molded Floor:** Easy-to-clean floor covering reduces noise and vibration.

**C Foot Throttle:** Standard on all Maxxum tractors

**D Tilt and Telescopic Steering Column:** Adjustable to suit any size operator.

**E Storage Compartments:** Standard front storage box is semi-refrigerated by the console vent.

**F Leather wrapped steering wheel.** *(optional)*

**G Instrument Cluster:** Shows key tractor performance with programmable display options.

**H Right-Hand Door:** Fully opening and operational. Standard on all models.

**I AFS Pro 700:** Fully integrated control center for performance monitoring, machine and implement control, guidance, and application and rate control. *(optional)*

**J MultiFunction Handle:** Simplifies operation by placing 85% of the controls operators use most in one hand.

**K MultiControl Armrest:** Provides access to all tractor controls and moves with the seat.

**Additional Features Not Shown:**

**High Visibility Roof Window/Panel:** Adds upward visibility for loader operation.

**HVAC Control Panel:** Backlit panel provides nighttime visibility.

**Radio Antenna Amplifier:** Built into the roof cap for improved reception and protection against detachment.

**Optional Electronic Joystick:** Operates front, mid or rear remotes (configuration dependent).





**MAXXUM**  
**CVXDrive**



# MAKE YOUR WORK LOAD EVEN MORE EFFICIENT.

Simple, intuitive and easy to operate. Maxxum CVXDrive automatically selects the best gear ratio for your desired speed, so you don't have to clutch or shift gears. You just set your speed and the transmission finds the sweet spot between power and fuel efficiency, making the Maxxum series tractor perfect for row crop applications, livestock operations and loader work.



## MAXXUM CVXDRIVE.

Maxxum CVXDrive tractors utilize a **split-throttle control to maximize efficiency**. The operator simply sets the split throttle to the appropriate minimum and maximum engine rpm, and the transmission **automatically adjusts** to maintain ground speed **under varying engine loads**—with speeds as low as 66 feet per hour—to find the ideal ground speed for every task.

### Transmission options include:

- Standard: 25 mph peak speed
- Optional: 31 mph peak speed

## PROGRAMMABLE.

Program three speed settings to make changing speeds quick and easy. Change speeds at the headlands or go from **field speed** to **road speed** with just a push of a button.

## EASY START AND STOP.

The **Active Stop** feature provides a **powered neutral** that **prevents tractor movement**, even with fully loaded trailers on steep slopes. This feature is also useful when attaching implements to the hitch, in round baling, and for **chores that require frequent starting and stopping**.





Deluxe Active Leather Seat Option Shown

- A Instructional Seat:** Ideal when training new operators or fold down to use the work surface. *(shown folded down)*
- B Tilt and Telescopic Steering Column:** Adjustable to suit any size operator.
- C Storage Compartments:** Standard front storage box is semi-refrigerated by the console vent.
- D Leather wrapped steering wheel.** *(optional)*
- E Instrument Cluster:** Shows key tractor performance with programmable display options.

- F AFS Pro 700:** Fully integrated control center for performance monitoring, machine and implement control, guidance and application and rate control.
- G Optional Electronic Joystick:** Operates front, mid or rear remotes (configuration dependent).
- H MultiFunction Handle:** Simplifies operation by placing 85% of the controls operators use most in one hand.
- I MultiControl Armrest:** Provides access to all tractor controls and moves with the seat.
- J Right-Hand Door:** Fully opening and operational. Standard on all models.

#### Additional Features Not Shown:

- Single-Piece Molded Floor:** Easy-to-clean floor covering reduces noise and vibration. *(not shown)*
- High Visibility Roof Window/Panel:** Adds upward visibility for loader operation.
- HVAC Control Panel:** Backlit panel provides nighttime visibility.
- Radio Antenna Amplifier:** Built into the roof cap for improved reception and protection against detachment.



# A BETTER DAY'S WORK STARTS WITH A BETTER WORKPLACE.

Operator comfort isn't about making the workday easy. It's all about making every day as productive as possible, even when it starts before sunrise or stretches past sunset. The Maxxum operator environment is designed to make the long hours—and the tough tasks—fly by. The Case IH Maxxum ActiveDrive 8 and CVXDrive cabs provide additional features needed to maximize in-field performance during long workdays.



## THE RIDE MAKES ALL THE DIFFERENCE.

The **optional suspended front axle** enhances operator comfort and helps keep power to the ground. Choose the suspended cab for the ultimate in ride control.

- The front of the cab features two rubber mounted cabin bearings while the rear of the cab features two adjustable spring and damper units. This provides up to **four inches of travel**, greatly reducing shock loads transmitted from the tractor to the operator by 25%.
- **Deluxe air-ride seat** comes standard or upgrade to the passively vented air-ride seat with heat, or a leather, actively vented, air-ride seat with heat.

## TAKE CONTROL OF THE WHEEL WITH ADAPTIVE STEERING CONTROL.

**Adaptive Steering Control** makes steering effortless for any operator. This variable ratio steering system allows you to **customize the number of steering wheel rotations needed to go from lock to lock**. ASC will also automatically adjust the steering wheel ratio based on your ground speed, giving you the ideal tractor control at any speed and for any operation.

## SHIFT GEARS AND CONTROL THE LOADER. ALL WITH ONE HAND.

Thanks to the **Advanced Loader Joystick**, you can shift all gears on the ActiveDrive 8 or change speed settings on the CVXDrive without removing your hand from the joystick. This optional feature **reduces loader cycling times**, helping you **increase efficiency** and **maximize productivity**.





A

## INTUITIVE OPERATION.

You've got every situation under your command.

The Maxxum control center is based on the **MultiControl Armrest** and **AFS Pro 700 display**, which are both integrated into the driver's seat armrest. This means that they are ergonomically placed within easy reach so you literally have the **key controls of the tractor at your fingertips** at all times.

The **MultiFunction Handle** is neatly configured and backlit so that it is easy to use, even if you are using it for the first time. You have a grasp of every situation because this lever **puts all the functions you need in the palm of your hand**.

The **Integrated Control Panel (ICP)**, located in the center portion of the armrest, contains the most frequently used settings for **traction, constant engine speed and the 3-point hitch**. Under the armrest pad are **adjustments for hydraulic and hitch settings**.

The **tractor performance monitor** is located in the right-hand **"A" post along with the instrument cluster**. Combined with the AFS Pro 700 display, the Maxxum control layout provides you with all the important tractor functions and information right where you need it.





ActiveDrive 8 with Advanced Loader Joystick Option Shown

- A** Instrument Cluster  
*(located on the right-hand cab "A" pillar)*
- B** AFS PRO 700 Display
- C** MultiFunction Handle
- D** Remote Valve Controls
- E** Advanced Loader Joystick
- F** Integrated Control Panel (ICP)
- G** PTO Control
- H** Electronic Draft Control (EDC) Panel  
*(Located below the armrest pad)*



# BETTER VISIBILITY, DAY...

Maxxum series tractors provide outstanding visibility in all directions with its SurroundVision cab. The roofline extends beyond glass to provide extra shade from the sun. Plus, rear glass tint helps reduce glare while the high visibility roof window/panel adds upward visibility.





## ...AND NIGHT.

Outstanding visibility doesn't end when the sun goes down. With standard LED lights that offer brighter, more natural light in every direction, Maxxum series tractors work as long as you do. Multiple lighting options, including up to 14 high powered LED lights, give you an unmatched field of vision while using less energy and providing a longer service life.

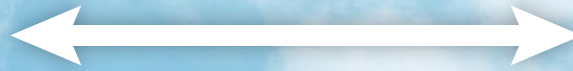




## BALER

- Bale reaches desired size
- Signals tractor to stop, open and close tailgate

## ROUND BALER AUTOMATION



ISOBUS Class 3\*

## TRACTOR

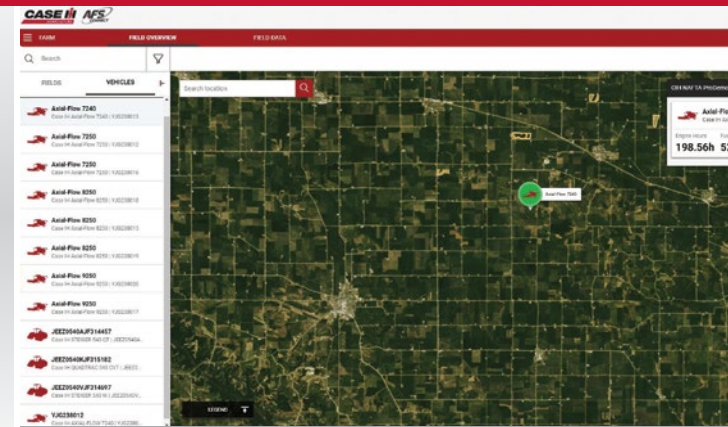
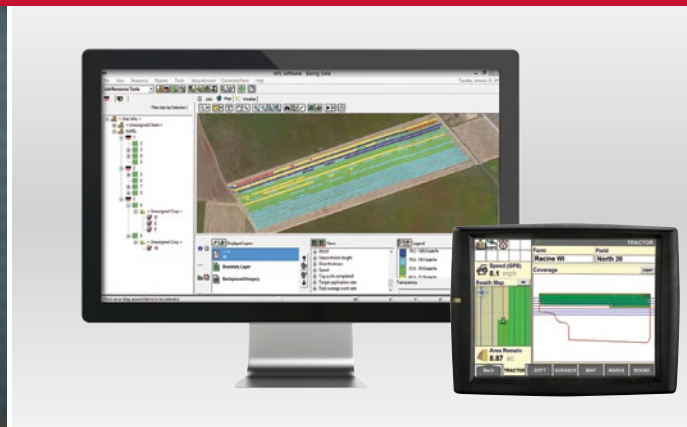
- Automatically stops the tractor
- Automatically engages hydraulics to open and close tailgate
- Operator signals tractor to start again





# TECHNOLOGY IN THE FIELD.

Maxxum series tractors are available with Advanced Farming Systems (AFS) technology from the factory, delivering an integrated precision farming solution that gives you more control over every operation.



## EQUIPMENT EFFICIENCIES.

- **AFS AccuGuide Autoguidance\***  
Minimize overlap while cutting hay to save on fuel, labor and machine expenses.
- **ISOBUS Class 3\***  
Communicates information between implement and tractor and allows the implement to control tractor functions to optimize packaging, bale density, forage quality and bale consistency.
  - **Round Baler Automation** Automatically stops the tractor, applies net wrap to the bale and raises/lowers the tailgate – reducing operator fatigue and increasing efficiency of baling.

## DATA MANAGEMENT.

- **AFS Mapping & Records**  
Use with a Case IH large square baler to record specific characteristics of bales, including moisture, cut length, weight and number of bales per acre/per cutting. Export data for analysis and record keeping.
  - **Boundary Map.** Monitor information, such as acres remaining and time remaining.
  - **Vehicle Performance Map.** Use the Trip Computer software in the AFS Pro 700 display to create maps of fuel economy to help make management decisions.

## LOGISTICS OPTIMIZATION.

- **Vehicle and/or Implement Data Monitoring**  
Remotely view key performance information—speed, engine oil pressure, fuel level, etc.
- **Cellular RTK Guidance (NTRIP)**  
Cellular RTK network provides tractors with sub-inch accuracy to minimize overlaps.
- **Fleet Management**  
Pinpoint the exact location of every machine to maximize utilization. Optimize timeliness of cutting, raking and baling operations for improved forage quality and yield.

\*Not available on ActiveDrive 4



# L10 SERIES LOADERS-READY FOR EVERY TASK.

Maxxum tractors are available loader-ready from the factory and are designed to operate as a system using the Case IH L10 series premium loaders. These new loaders feature a new look, even better visibility, faster cycle times and improved strength. Choose from a wide range of buckets and tools to turn your Maxxum into a versatile workhorse.



## BETTER, STRONGER, FASTER.

- A new design on L10 series loaders follows the sleek lines of the Maxxum hood design.
- L10 series loaders work without obstructing any sight lines from the excellent visibility provided by Case IH tractor cabs, so you can focus on the task at hand.
- An efficient, flow-optimized hydraulic system results in faster cycle times on L10 series loaders. Easy and fast mounting and dismounting means you can get to work or on to the day's next project more quickly.
- The lineup features cast and forged parts to provide extra strength at crucial points, with chamfered and embossed arm designs. The new L10 series loaders are better prepared for bigger tasks and heavy work for years to come.

## QUICK-LOCK SYSTEM.

The spring-loaded design keeps pins with the loader—no loose pins or parts to go missing when attaching the loader. Plus, built-in safety mechanisms maximize simplicity and dependability.

## THE RIGHT TOOL FOR THE JOB.

The Case IH Maxxum series offers more than 70 tools and attachments, including:

- Heavy-duty and high-volume buckets
- Forks
- Grapples
- Bale spikes
- Grips
- Cutters

## MAXXUM TRACTOR/LOADER COMPATIBILITY.

Model	Loader	Max. Lift Capacity** Non Self-Leveling / Mechanical Self-Leveling	Max. Height*** Non Self-Leveling / Mechanical Self-Leveling	Breakout Force** Non Self-Leveling / Mechanical Self-Leveling
Maxxum 115 Maxxum 125 Maxxum 135 Maxxum 145 Maxxum 150	L103*	2,381 lb. (1 080 kg) / N/A	131 in. (3 330 mm) / N/A	3,439 lb. (1 560 kg) / N/A
	L105	2,932 lb. (1 330 kg) / 5,203 lb. (2 360 kg)	150 in. (3 810 mm) / 150 in. (3 810 mm)	4,674 lb. (2 120 kg) / 5,975 lb. (2 710 kg)
	L105 Long Reach	N/A / 4,365 lb. (1 980 kg)	N/A / 156 in. (3 950 mm)	N/A / 4,894 lb. (2 220 kg)

\* Only compatible with 2WD

\*\* 31.5 in. (800 mm) Forward of Pivot Pin

\*\*\* Under Level Bucket







# MAXXUM ACTIVE DRIVE 4 SPECIFICATIONS

MODEL	MAXXUM 115 ACTIVEDRIVE 4	MAXXUM 125 ACTIVEDRIVE 4	MAXXUM 135 ACTIVEDRIVE 4	MAXXUM 145 ACTIVEDRIVE 4	MAXXUM 150 ACTIVEDRIVE 4
<b>POWER</b>					
Type	Tier 4 B/Final with Selective Catalytic Reduction (SCR)				
Engine HP <sup>1</sup>	116	125	135	145	
Maximum Engine HP <sup>2</sup>	125	135	145	155	158
Engine Power Boost <sup>3</sup>	20		24	20	17
Engine Maximum Boosted HP*	145	155	169	175	
PTO HP**	95	105	110	120	125
Cylinders/Displacement	FPT 4 Cylinder/4.5 L (273 cu in.)				FPT 6 Cylinder/6.7 L (409 cu in.)
Number of Valves	16				24
Aspiration	Cross-flow aspiration/Turbocharged				
<b>ELECTRICAL</b>					
Alternator (Standard/Optional)	150 amps / 200 amps				
Battery (Standard/Optional)	12 volt - 800 CCA / 1,300 CCA				
<b>TRANSMISSION/PTO</b>					
Standard 2WD	16 × 16 19 mph (30 kph) semi-powershift				
Standard MFD	16 × 16 25 mph (40 kph) semi-powershift				
MFD Option 1	17 × 16 25 mph (40 kph) economy semi-powershift				
MFD Option 2	17 × 16 30 mph (50 kph) semi-powershift				
Creeper Speeds @ Rated Engine RPM	Minimum target speed = 528 feet (161 m) per hour				
PTO	540/1000 rpm 1.375 in. reversible shaft				
<b>AXLES</b>					
Rear Axle (Standard/Optional)	Flange/Bar				
Bar Axle Diameter	3.625 in. (92 mm)				
Rear Axle Lengths (Flange/Bar)	69 in. (1753 mm) / 98 in. (2489 mm)				
Front Axle 2WD (Standard)	Class 3 non-suspended standard-duty				
Front Axle MFD (Standard/Optional)	Class 3 non-suspended / class 3 suspended, class 4, or class 4 suspended				
Wheelbase 2WD/MFD	104.4 in. (2651 mm) / 104.0 in. (2642 mm) MFD				
<b>HYDRAULICS/HITCH</b>					
System Type (Standard/Optional)	Fixed displacement pump (FD) / pressure flow compensating (PFC)				
Remotes (Standard/Optional)	2 mechanical / 3 or 4 mechanical				
Max Flow Available @ One Remote	19.8 gpm (75 L/min.)				
Main Implement Pump Max Flow Capacity (Standard/Optional)	22.7 gpm (86 L/min.) / 31.9 gpm (121 L/min.)				
3-point Hitch Category (Standard/Optional)	Cat II / Cat II-IIIIN				
Hitch Lift Capacity (FD Pump) Std. (80 mm)/Opt. (90 mm)	6,990 lb. (3170 kg) / 8,945 lb. (4057 kg)				
Optional Mid-Mount Valve	2 or 3 function				
<b>CAPACITIES</b>					
Fuel Tank (Standard/Max Capacity)	56.8 gal. (215 L) / 68.4 gal. (259 L)				
Diesel Exhaust Fluid (DEF) Tank	8.3 gal (31.4 L)				
<b>CAB</b>					
Cab Suspension	Optional				
Glass Area - Including Standard Hi-Vis Roof	63.2 sq. ft. (5.9 m <sup>2</sup> )				
<b>WEIGHT</b>					
Average Standard Weight*** lb. (kg) w/ Standard Front 2WD Axle	10,825 lb. (4910 kg)		12,004 lb. (5445 kg)		12,280 lb. (5570 kg)
Average Standard Weight*** lb. (kg) w/ Standard Front MFD Axle	11,376 lb. (5160 kg)		12,555 lb. (5695 kg)		12,831 lb. (5820 kg)

1 Engine HP @ Rated 2,200 rpm ISO per ECE R120 (CV)

2 Maximum Engine HP @ 1,900 rpm ISO per ECE R120 (CV)

3 Power boost available during mobile PTO/hydraulics/transport operation

\* ISO per ECE R120 (CV)

\*\* 2,200 rpm for road transport and hydraulic work, limited @ 2,100 rpm for PTO and low range transport per SAE

\*\*\* Average Standard Weight is based on the standard tractor, with 18.4R38 less front weight bracket, without operator and minimum fuel







# MAXXUM ACTIVEDRIVE 8 AND CVXDRIVE SPECIFICATIONS

MODEL	MAXXUM 115 ACTIVEDRIVE 8 AND CVXDRIVE	MAXXUM 125 ACTIVEDRIVE 8 AND CVXDRIVE	MAXXUM 135 ACTIVEDRIVE 8 AND CVXDRIVE	MAXXUM 145 ACTIVEDRIVE 8 AND CVXDRIVE	MAXXUM 150 ACTIVEDRIVE 8 AND CVXDRIVE
<b>POWER</b>					
Type	Tier 4 B/Final with Selective Catalytic Reduction (SCR)				
Engine HP <sup>1</sup>	116	125	135	145	158
Maximum Engine HP <sup>2</sup>	125	135	145	155	158
Engine Power Boost <sup>3</sup>	20		24	20	17
Engine Maximum Boosted HP*	145	155	169	175	
PTO HP**	95	105	110	120	125
Cylinders/Displacement	FPT 4 Cylinder/4.5 L (273 cu in.)				FPT 6 Cylinder/6.7 L (409 cu in.)
Number of Valves	16				24
Aspiration	Cross-flow aspiration/Turbocharged				
<b>ELECTRICAL</b>					
Alternator (Standard/Optional)	150 amps / 200 amps				
Battery (Standard/Optional)	176 Ah 1300 EN CCA				
<b>TRANSMISSION/PTO</b>					
MFD Standard/Option 1/Option 2	23 × 23 25 mph (40 kph) / 24 × 24 25 mph (40 kph) / 24 × 24 30 mph (50 kph)				
CVXDrive Standard Transmission	Standard 25 mph / 40 kph				N/A
CVXDrive Optional Transmission	Optional 30 mph / 50 kph				
Creeper Speeds	Minimum target speed = 722 ft. (220 m) per hour / CVXDrive = 66 ft. (20 m) per hour				
PTO	540/1000 rpm 1.375 in. reversible shaft				
<b>AXLES</b>					
Rear Axle (Standard/Optional)	Flange/Bar				
Bar Axle Diameter	3.625 in. (92 mm)				
Rear Axle Lengths (Flange/Bar)	69 in. (1753 mm) / 98 in. (2489 mm)				
Front Axle MFD (Standard/Optional)	Class 3 non-suspended / class 3 suspended, class 4, or class 4 suspended				
Wheelbase	104.0 in. (2642 mm)				
<b>HYDRAULICS/HITCH</b>					
System Type (Standard/Optional)	Pressure flow compensating (PFC)				
Electronic Rear Remotes (Standard/Optional)	3/4				
Mechanical Rear Remotes	2, 3 or 4 on ActiveDrive 8, 3 on CVXDrive				
Max Flow Available @ One Remote	25.1 gpm (95 L/min.) mechanical remote / 26.5 gpm (100 L/min.) electronic remote				
Main Implement PFC Pump Max Flow Capacity	39.6 gpm (150 L/min.)				
3-point Hitch Category (Standard/Optional)	Cat II / Cat II-IIIN				
Hitch Lift Capacity (FD Pump) Std. (80 mm)/Opt. (90 mm)	6,990 lb. (3170 kg) / 8,945 lb. (4057 kg)				
Optional Mid-Mount Valve	2 or 3 function				
<b>CAPACITIES</b>					
Fuel Tank (Standard/Max Capacity)	56.8 gal. (215 L) / 68.4 gal. (259 L)				
Diesel Exhaust Fluid (DEF) Tank	8.3 gal (31.4 L)				
<b>CAB</b>					
Cab Suspension	Standard				
Glass Area - Including Standard Hi-Vis Roof	63.2 sq. ft. (5.9 m <sup>2</sup> )				
<b>WEIGHT</b>					
Average Standard Weight*** lb. (kg) w/ Standard Front Axle	13,580 lb. (6160 kg)				14,220 lb. (6450 kg)

1 Engine HP @ Rated 2,200 rpm ISO per ECE R120 (CV)

2 Maximum Engine HP at 1,900 rpm ISO per ECE R120 (CV)

3 Power boost available during mobile PTO/hydraulics/transport operation

\* ISO per ECE R120 (CV)

\*\* 2,200 rpm for road transport and hydraulic work, limited @ 2,100 rpm for PTO and low range transport per SAE

\*\*\* Average Standard Weight is based on the standard tractor, with 18.4R38 less front weight bracket, without operator and minimum fuel







# MAXIMIZE YOUR TIME BEHIND THE WHEEL WITH MINIMAL TIME UNDER THE HOOD.

Maxxum series tractors are engineered with rugged Case IH components proven to provide years of reliable service. Case IH quality replacement parts, maintenance programs and service expertise are designed to boost equipment efficiency and protect your investment – season after season.



## MAINTENANCE THAT'S QUICK, EASY AND AT EYE LEVEL.

Check engine and transmission oil without raising the hood. Plus, radiator and coolers fold out for easy cleaning. You can expect high performance, reliability and long life when you choose these Genuine Case IH products\*:

- **No. 1 Engine™ oil** allows you to go up to 600 hours between changes and provides maximum protection, performance and life for heavy-duty, high-temperature operations.
- **Nexlore™ Transmission oil** provides superior wear protection for hydraulic components, drive train gears and other transmission parts. It also suppresses wet brake chatter, enhances brake stopping capacity, including PTO brakes, and provides excellent filterability for optimum hydraulic system performance.

## GENUINE CASE IH FILTERS.

Genuine Case IH filters offer the same convenient 600-hour service interval. They meet precise engineering, material and manufacturing specifications for Maxxum series tractors.

- **Oil Filters with MicroLoc™** synthetic media are 70% more efficient in filtering critical contaminants as compared to paper-based filters.
- **Air Filters with PowerCore®** deliver up to 3x more efficiency than conventional filters – capturing particles 1/10th the diameter of a human hair.
- **Hydraulic Filters** deliver an optimum balance of efficiency and capacity with 48% more dirt-holding capacity.\*\*
- **Fuel Filters with MicroLoc** synthetic media deliver high-efficiency filtration in the toughest environments and an increased service life.

## SERVICE SOLUTIONS.

The **Ready Stock locker program** alerts your Case IH dealer to stock the maintenance parts he knows you'll need in advance. Your dealer also provides special service solutions to help keep your Maxxum series tractor in peak condition, including:

- Special inspection clinics
- Service offers
- Industry-leading warranties
- Preventative maintenance programs

## MY SHED™ AND MY SHED MOBILE APP.

Machine Management, Parts Manuals, 24/7 Dealer Connection, Toolboxes and Machine Info all available at your fingertips.



\*Always refer to the operators manual for proper lubricant selection. \*\*Results from a field test of CNH filter (84226263) versus competitive filter (ISO 16889).



# THE CASE IH LIVESTOCK TRACTOR FAMILY.

The first point of consideration when choosing the right tractor is the type of work you plan to do. Choosing between tractors for field work like cutting and baling hay, chores like cleaning and feeding livestock, and specialized lawn or orchard jobs helps you distinguish between a versatile or specialty piece of equipment. Simply answer a few questions about how you plan to use your tractor, and the tool will narrow your search to fit your operation. Regardless of which model you select, you'll bring home a high-productivity tractor designed for comfort and control, no matter what you need to do.

FIND THE RIGHT  
**RED TRACTOR**

[caseih.com/rightredtractor](http://caseih.com/rightredtractor)



## Farmall Compact

Model	Engine HP*	PTO HP
35A & 35C	35	29
40A & 40C	40	34
45C	45	38
55C	55	46

## Farmall Utility

Model	Engine HP*	PTO HP
50A	53	45
55A	54	43
60A	60	51
65A	64	51
70A	70	61
75A	74	60
65C	64	50
75C	74	64
90C	86	73
100C	99	85
110C & 110U	107	93
120C & 120U	117	100

## Farmall 100A

Model	Engine HP*	PTO HP
110A	110	90
120A	120	96
130A	130	105
140A	140	115

## Maxxum

Model	Engine HP*	PTO HP
115	116	95
125	125	105
135	135	110
145	145	120
150	145	125

## Puma

Model	Engine HP*	PTO HP
150	150	125
165	165	140
185	180	150
200	200	170
220	220	190
240	240	210

\* Engine HP at rated 2,200 RPM ISO per ECE R120 (CV)





SAFETY NEVER HURTS!™ Always read the Operator's Manual before operating any equipment. Inspect equipment before using it, and be sure it is operating properly. Follow the product safety signs, and use any safety features provided. CNH Industrial America LLC reserves the right to make improvements in design and changes in specifications at any time without notice and without incurring any obligation to install them on units previously sold. Specifications, descriptions and illustrative material herein are as accurate as known at time of publication, but are subject to change without notice. Availability of some models and equipment builds varies according to the country in which the equipment is used.

©2019 CNH Industrial America LLC. All rights reserved. Case IH is a trademark registered in the United States and many other countries, owned by or licensed to CNH Industrial N.V., its subsidiaries or affiliates. Any trademarks referred to herein, in association with goods and/or services of companies other than CNH Industrial America LLC, are the property of those respective companies. Printed in U.S.A.  
www.caseih.com CIH19091602

**CASE IH**  
AGRICULTURE